

HERTS & BEDS WOODTURNERS WOODBITS

March 2018

Issue 142

2018 Competition Subjects

Mar	2 or more woods
April	Decorated Easter egg
May	Hollow form
June	Platter
July	Mallet
Aug	Egg & Cup
Sept	Round bottomed bowl
Oct	Ball
Nov	Candle holder
Dec	Christmas Decoration

Annual Subscription 2018

If you are one of the eight people who have not renewed but intend doing so, you have to the end of the month to renew or your membership will lapse

February Turners of the Month



1 Dave Guy

2 Les Clarke

3 Chris Squires

Chairman: Tony Taylor chairman@hertsandbedswoodturners.org
Secretary: Colin Clark secretary@hertsandbedswoodturners.org
Treasurer: Peter Hoare treasurer@hertsandbedswoodturners.org

HERTS & BEDS WOODTURNERS WOODBITS



1: Richard Hartshorne 2. David Lock . Grahame Tomkins



1 Tony Taylor 2 Mike Fitz 3 Bruce Edhouse



1. : Tony Taylor 2. Cliff Ward 3. Cliff Ward

Chairman: Tony Taylor chairman@hertsandbedswoodturners.org
 Secretary: Colin Clark secretary@hertsandbedswoodturners.org
 Treasurer: Peter Hoare treasurer@hertsandbedswoodturners.org

HERTS & BEDS WOODTURNERS WOODBITS

February Demonstrator – Steve Healy

A candlestick with a difference

Steve devoted his whole demonstration to making a candlestick with the original feature of textured and painted decoration. As it involved both spindle and faceplate work, it was a valuable source of instruction, particularly for our newer members, with some fine details of technique useful to us all.

The base was started by mounting an Ash blank about 6 inches diameter and two inches thick on a screw chuck and, with a long grind bowl gouge, trimmed to about 5 by 1.5 inches. A mortice was cut with parting tool and skew to allow for mounting on the chuck in expansion mode. The underside of the base was slightly hollowed and finished with a shearing cut with the bowl gouge, so that only minimal sanding was required before buffing with Yorkshire grit. Next, with the base mounted on the chuck, the upper surface was shaped with an ogee form and a beaded rim formed with a spindle gouge. The hole for the stem was cut about half the depth of the base.



For the stem an Ash square of about 2 by 12 inches was mounted between centres and rounded with a roughing gouge. A tenon was formed on one end to fit the hole in the base, taking care to slightly undercut the mating surface. Three shallow glue grooves were cut on the tenon. The next step was to drill the hole in one end to receive the brass candle holder. This was done by fitting a

Forstner bit in a chuck in the headstock, centering the wood on the tailstock then, holding the work still, advancing it on to the drill. After this the base was again mounted on the chuck and the stem glued in place and driven between this and a steb centre in the candle hole. Shaping of the stem was done with spindle gouge and skew chisel. It was striking to see how much the appearance was improved by final sharpening of the details with the skew.



Steve devoted the second part of the demonstration to decorating the stem of the candlestick. The first step was to texture two regions with the Robert Sorby texturing tool. A useful tip was to finish by rapidly tapping the cutter on the rotating work. After brushing off loose dust, the textured areas were carefully painted black with acrylic paint rubbed on with one finger. Once the paint was fully dry, the excess was sanded off to reveal the attractive textured pattern. It remained only to apply a finish and to glue in the candle holder.

The demonstration was full of interesting detail and delivered in style and was much appreciated by all.

Tony Taylor

HERTS & BEDS WOODTURNERS WOODBITS



Steve's Work

2018 programme

Mar	Mick Hanbury
Apr	AGM
May	Mark Sanger
Jun	Club Night
Jul	Martin Saban-Smith
Aug	Les Thorne
Sep	Club Night
Oct	Mark Baker
Oct 28	Richard Findley (All Day demo)
Nov	Stuart King
Dec	Xmas Social
<i>Jan</i>	<i>Gary Rance</i>
<i>Feb</i>	<i>Paul Howard</i>
<i>Mar</i>	
<i>Apr</i>	<i>AGM</i>
<i>May</i>	<i>Steve Giles</i>
<i>Jun</i>	

Chairman: Tony Taylor chairman@hertsandbedswoodturners.org
 Secretary: Colin Clark secretary@hertsandbedswoodturners.org
 Treasurer: Peter Hoare treasurer@hertsandbedswoodturners.org

HERTS & BEDS WOODTURNERS WOODBITS

Do you turn pens?

Over the years I have turned many pens for charity. I used to get the kits from penkitsuk because they were cheaper and very reliable – itself set up for charitable purchases. Unfortunately, this source is closing down (see front page of the website <http://www.penkitsuk.com>). The cost of buying pen kits elsewhere is high, however the retiring chap has kindly published his supplier in Taiwan (<http://www.penkitsmall.com/>). If you are interested in buying any kits then have a look at the volume prices and compare them with places such as Axminster. Even with postage – the cost is about half.

The cost of the kits goes down as the volume increases and I would be pleased to have a conversation with anyone interested in buying some with me. The more we buy between us the better deal we get.

Please contact me if you want to talk about it. I tend to go for the simplest and cheapest Slimline 7mm pen.

Allen Kaye

From Australian Flu suffering Colin Smith - South East Rep, AWGB

Just to firstly remind you that there is less than a month to get the early bird discount for this year's seminar.

There is a Tutor Assessment day planned for 1st April at Paul Howard's (a future demonstrator for us) workshop at Tiptree Essex. If you are interested contact John Montgomery Coordinator and South West rep.

Don't forget the AWGB AGM at Little Yeldham, Essex on 22nd April.

Data Protection

The rules on data protection are being strengthened and the new regulations come into force in May. Our Treasurer will explain how these affect us in the next newsletter.

Health and Safety at Adeyfield

We have been asked by the Adeyfield centre to remind members of safety procedures. You can see the following 2 notices on the right hand wall of the main room. The picture shows where we assemble should evacuation be needed. **It is important that all members sign in because that list is used for a roll call in the event of evacuation.** When you are next at a meeting please look at the notice and note where the fire exits are. The Chairman will remind members of these issues at the next meeting.

Chairman: Tony Taylor chairman@hertsandbedswoodturners.org
Secretary: Colin Clark secretary@hertsandbedswoodturners.org
Treasurer: Peter Hoare treasurer@hertsandbedswoodturners.org

HERTS & BEDS WOODTURNERS WOODBITS

FIRE AND BOMB PROCEDURE

ADEYFIELD COMMUNITY CENTRE

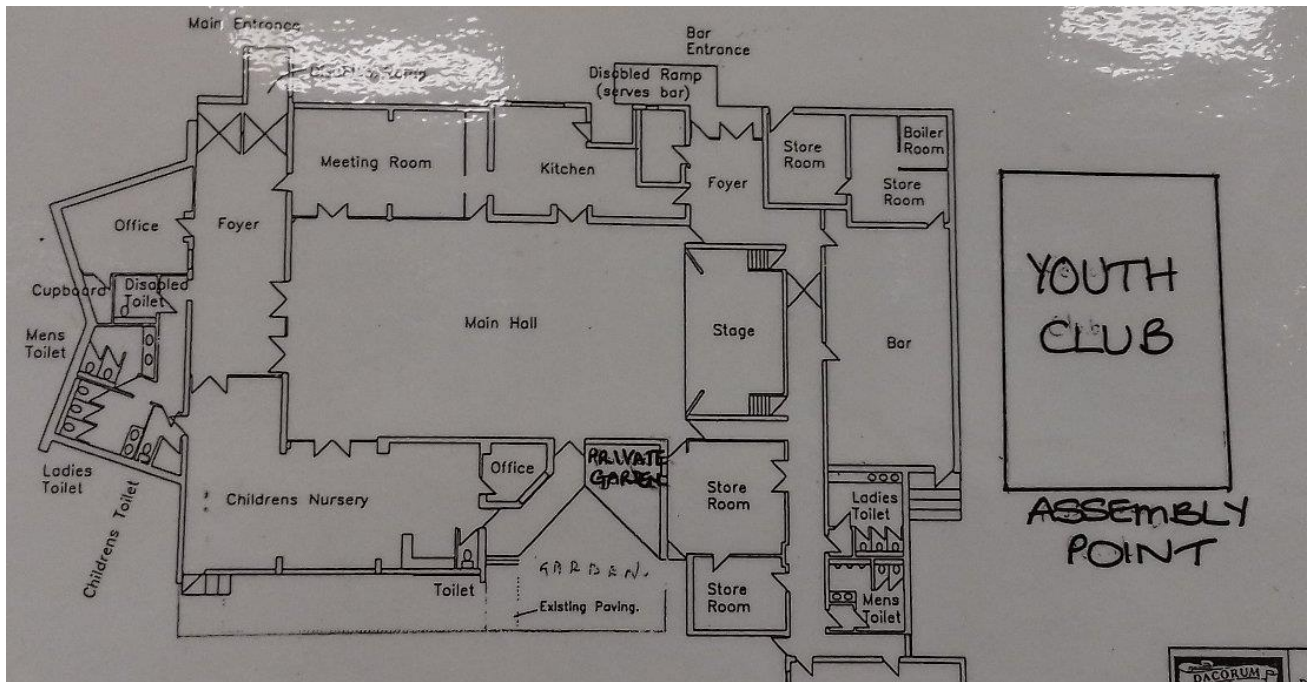
THE PRIMARY CONCERN IS THE SAFETY OF THE PEOPLE IN THE BUILDING, ITS CONTENTS ARE OF SECONDARY IMPORTANCE

1. THE FIRE EVACUATION OFFICER WILL BE THE CENTRE MANAGER OR THE CARETAKER ON DUTY.
2. EVERYONE MUST BE EVACUATED FROM THE BUILDING WHEN THE ALARMS SOUNDS OR WHEN REQUESTED BY THE DESIGNATED FIRE EVACUATION OFFICER. GROUP LEADERS WILL BE RESPONSIBLE FOR ENSURING THAT ALL MEMBERS OF THEIR GROUP ARE EVACUATED IMMEDIATELY. IN THE EVENT OF A PRIVATE BOOKING THE HIRER WILL BE DEEMED TO BE THE GROUP LEADER. THE FIRE EVACUATION OFFICER WILL INSPECT ALL PARTS OF THE BUILDING WHERE IT IS SAFE TO DO SO TO ENSURE THAT ALL PERSONS ARE EVACUATED.
3. ON DISCOVERY OF A FIRE A PERSON MUST RAISE THE ALARM BY BREAKING THE BREAK GLASS POINT. ON HEARING THE ALARM THE FIRE EVACUATION OFFICER OR GROUP LEADER/HIRER WILL CALL 999.
4. DO NOT STOP TO COLLECT PERSONAL BELONGINGS AND CLOTHING.
5. EVACUATE THE BUILDING AND GO STRAIGHT TO YOUR ASSEMBLY POINT INDICATED ON THE BUILDING PLANS WITH THIS PROCEDURE VIA YOUR NEAREST FIRE EXIT.
6. MOVE QUICKLY AND IN AN ORDERLY MANNER-DO NOT RUN.
7. PERSONS USING THE KITCHEN SHOULD ENSURE THAT ALL POWER IS TURNED OFF AT THE MAIN POWER POINT AND RINGS TURNED OFF WHERE IT WOULD DANGEROUS TO LEAVE THEM BEFORE LEAVING THE AREA.
8. IF AFTER EVACUATION ANYONE IS FOUND TO BE MISSING, ATTEMPTS SHOULD BE MADE TO ASCERTAIN THEIR WHEREABOUTS WITHOUT ENTERING THE BUILDING.
9. DO NOT RE ENTER THE BUILDING UNTIL THE FIRE BRIGADE INFORM YOU THAT IT IS SAFE TO DO .

GENERAL:

ENSURE THAT ALL ESCAPE ROUTES ARE KEPT CLEAR AND FIRE FIGHTING APPLIANCES ARE NOT OBSTRUCTED. ENSURE THAT ALL FIRE DOORS ARE KEPT CLOSED AND ALL CRASH BARS EXITS ARE WORKING AT ALL TIMES. WHERE APPLICABLE ENSURE ALL FIRE EXITS DOORS ARE NOT LOCKED WHILST PEOPLE ARE IN THE DESIGNATED ROOM.

HERTS & BEDS WOODTURNERS WOODBITS



Chairman: Tony Taylor chairman@hertsandbedswoodturners.org
Secretary: Colin Clark secretary@hertsandbedswoodturners.org
Treasurer: Peter Hoare treasurer@hertsandbedswoodturners.org